



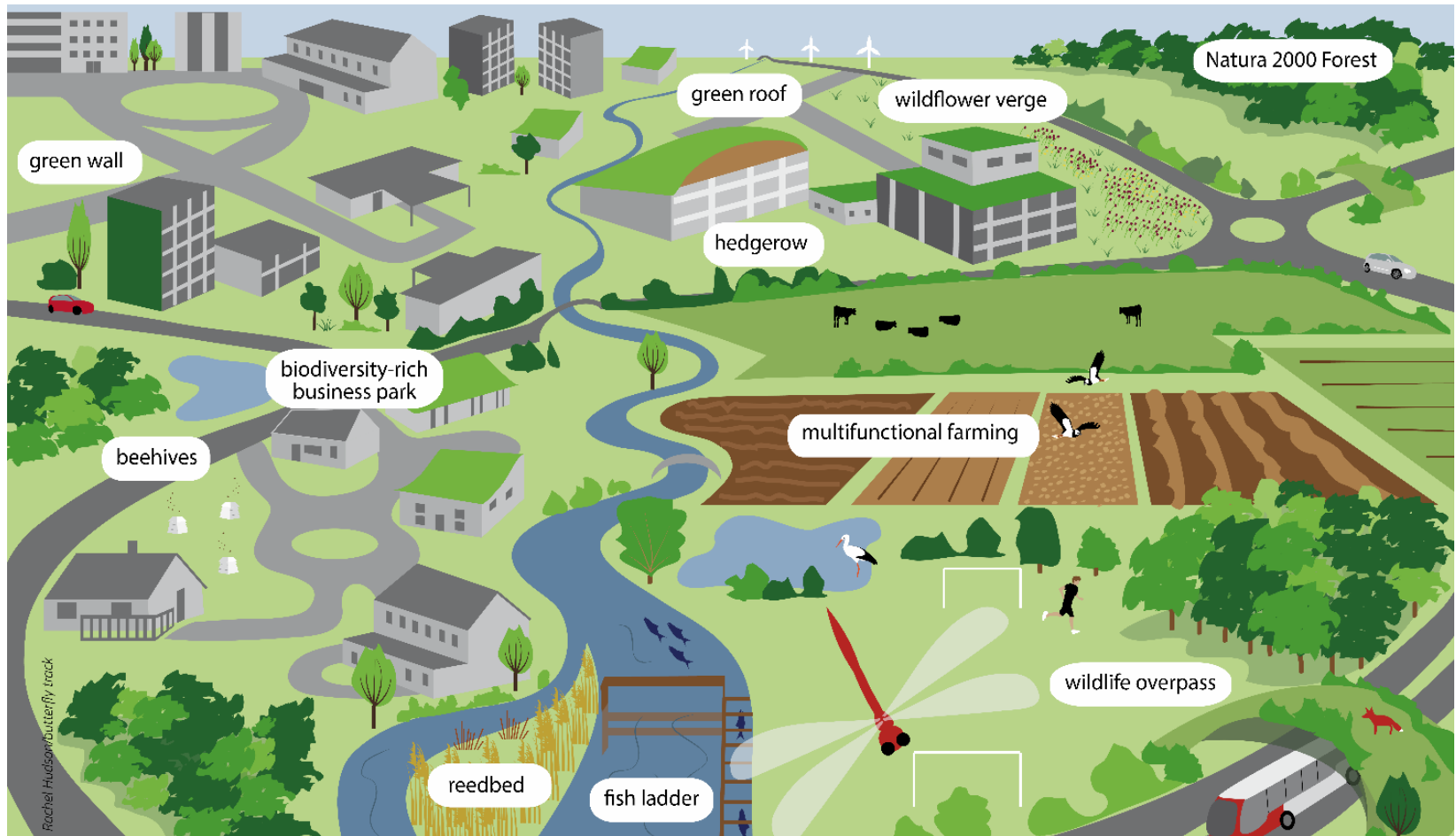
Bevölkerungspräferenzen für städtische Grün- und Wasserflächen in der Städte Liberec und Dresden

Ralf-Uwe Syrbe

Karsten Grunewald, Patrycia Brzoska, Olaf Bastian, Jiří Louda, Ina Neumann, Lenka Dubová

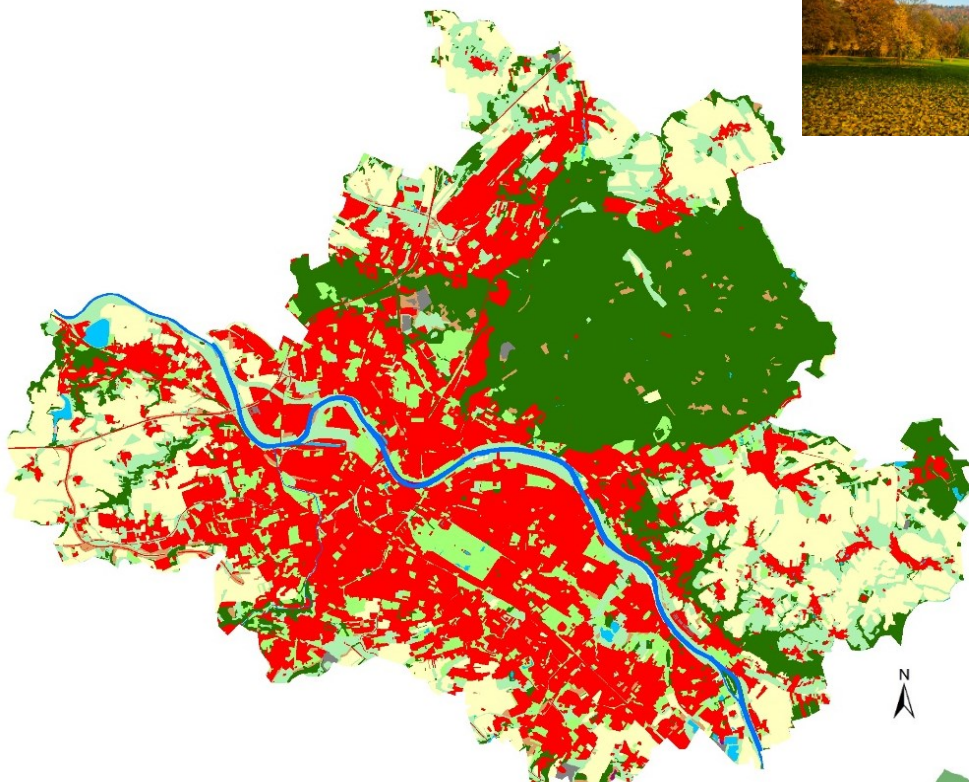
Liberec, Sept. 25th 2020

What belongs to the Urban Green Infrastructure?

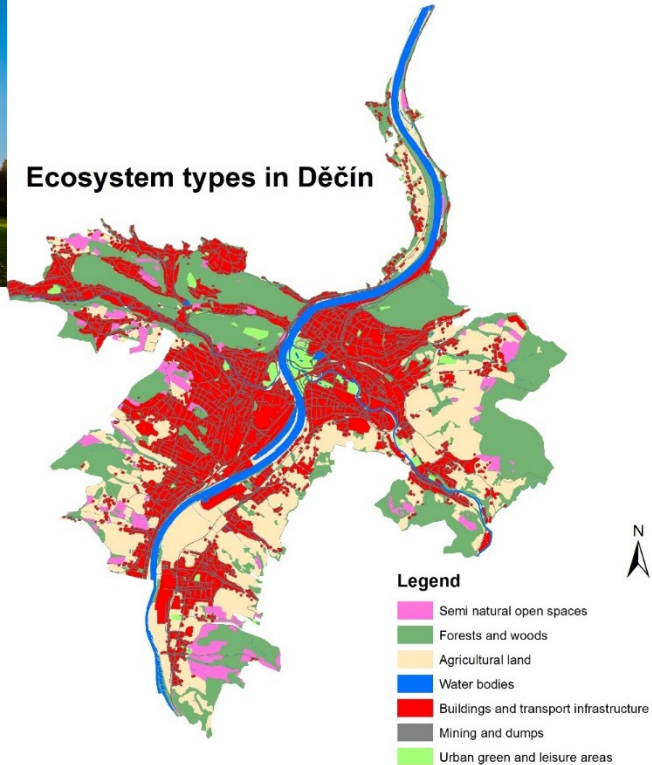


European Commission (2013): Building a Green Infrastructure for Europe. doi: 10.2779/54125

Ecosystem types in Dresden



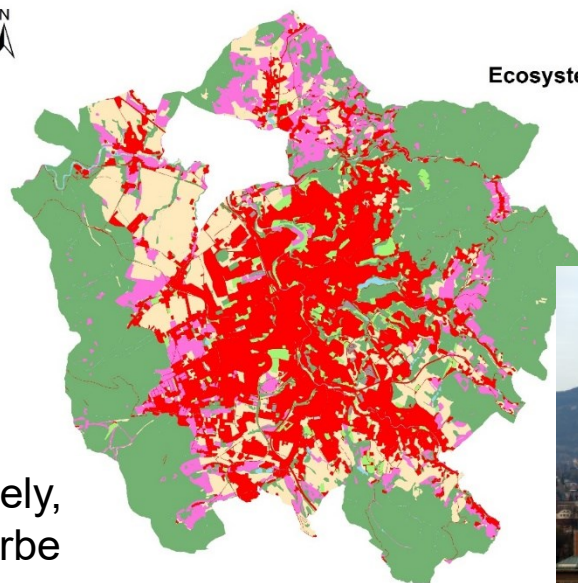
Ecosystem types in Děčín



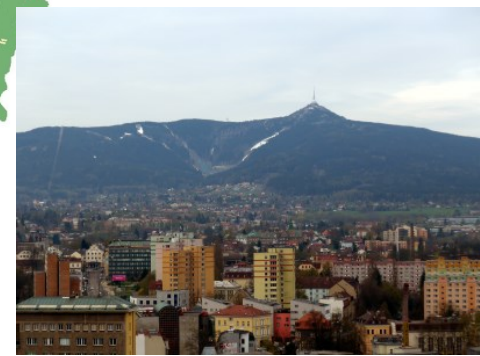
Legend

- Semi natural open spaces
- Forests and woods
- Agricultural land
- Water bodies
- Buildings and transport infrastructure
- Mining and dumps
- Urban green and leisure areas

Ecosystem types in Liberec

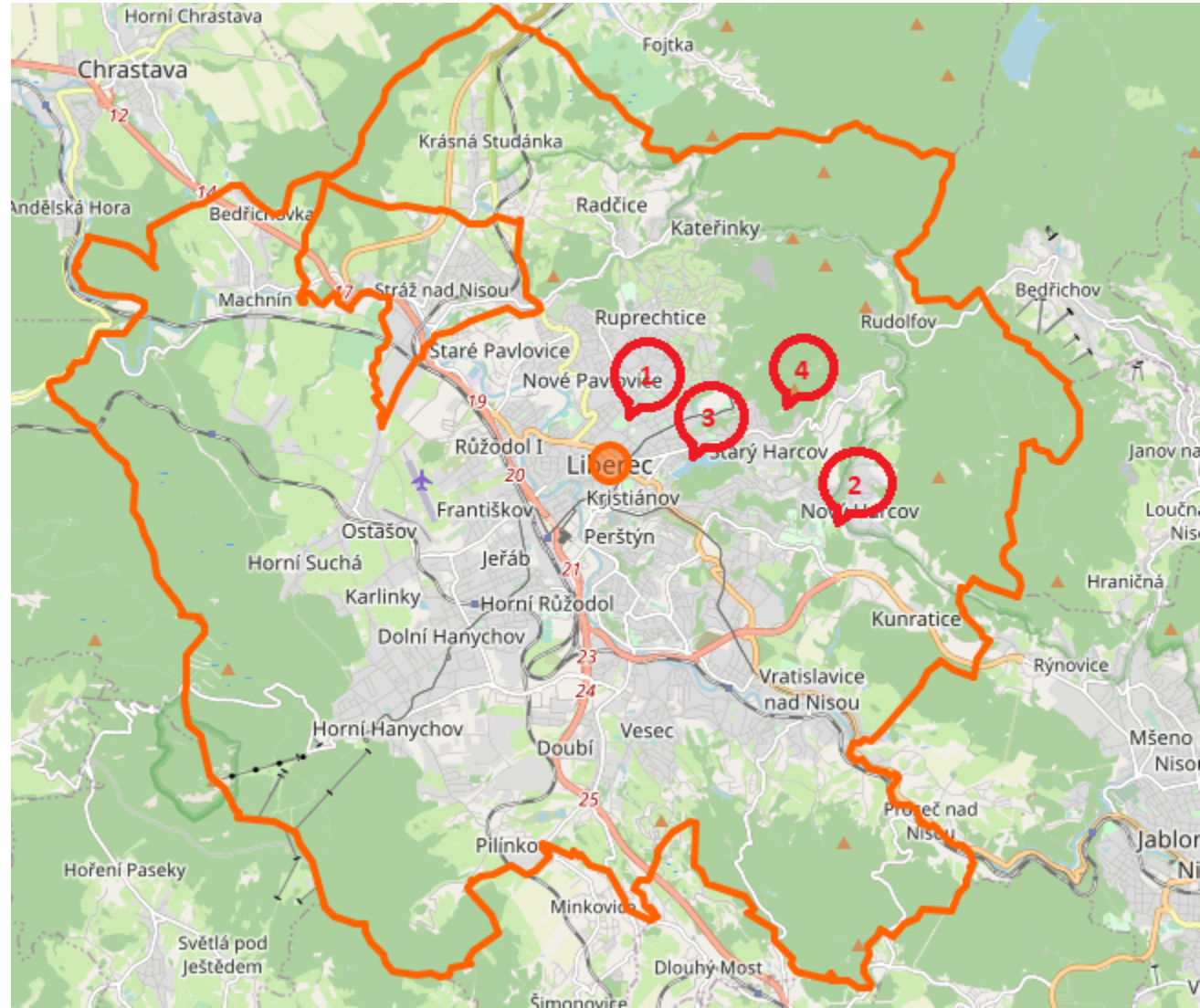


Photos: Vesely,
Brzoska, Syrbe



Survey sites in Liberec

1. Park Budyšínská
2. Kunratická-Sídliště
3. Přehrada Harcov
4. Liberecká výšina



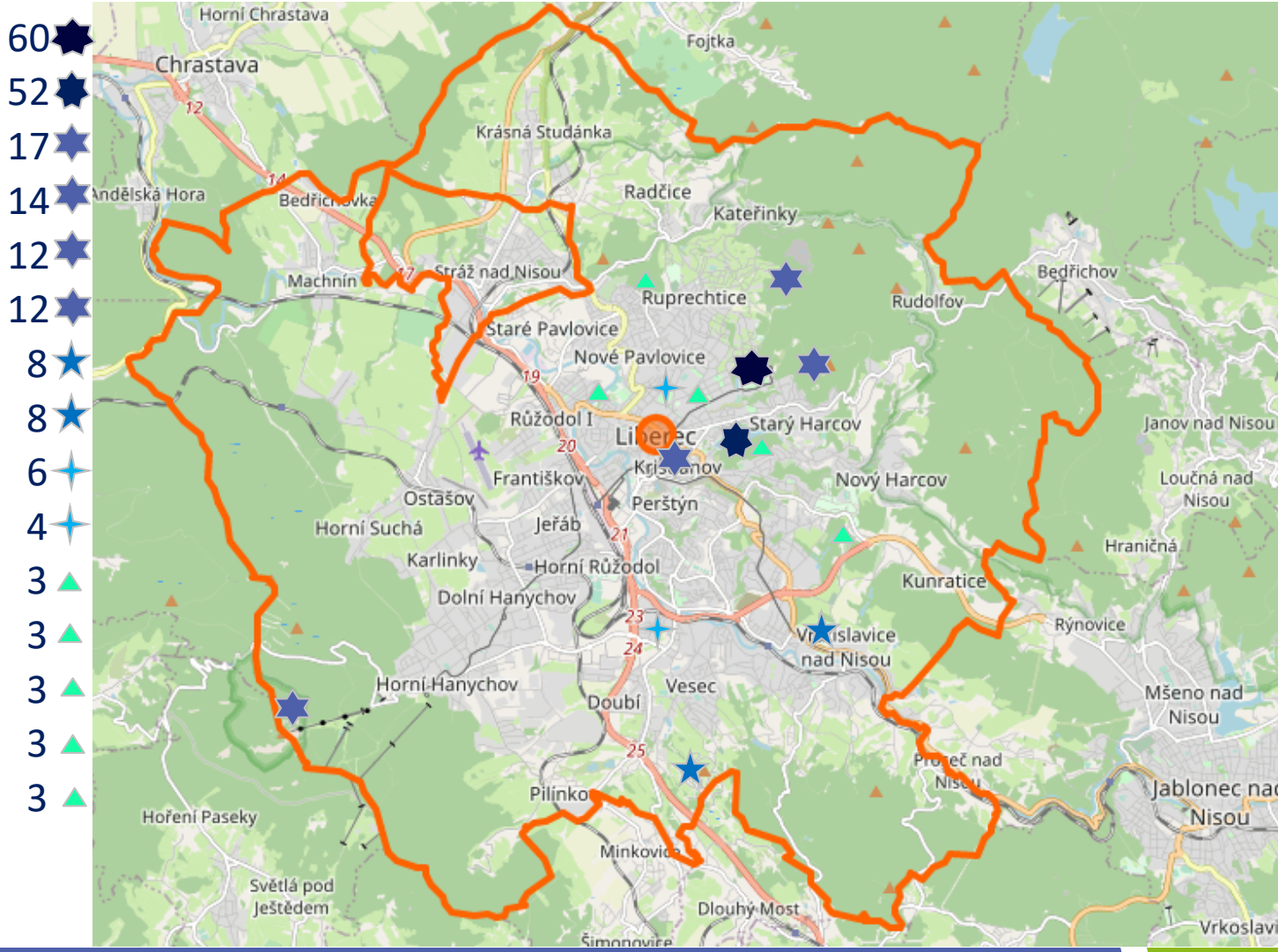
Self evaluation of health effects by the answering people

Feelings in Urban Green Infrastructure	Dresden (%)	Liberec (%)	Děčín (%)
recovered/relaxed	81	73	68
satisfied/happy	70	68	71
comfortable	68	60	46
energetic	51	52	49
able to concentrate	44	47	39
not lonely anymore	16	34	29



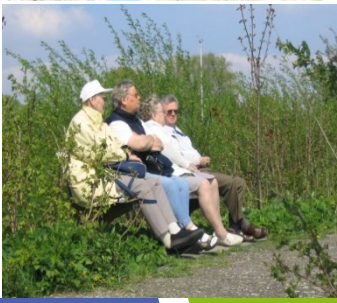
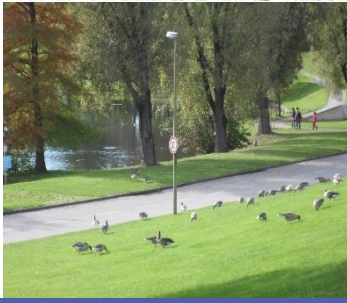
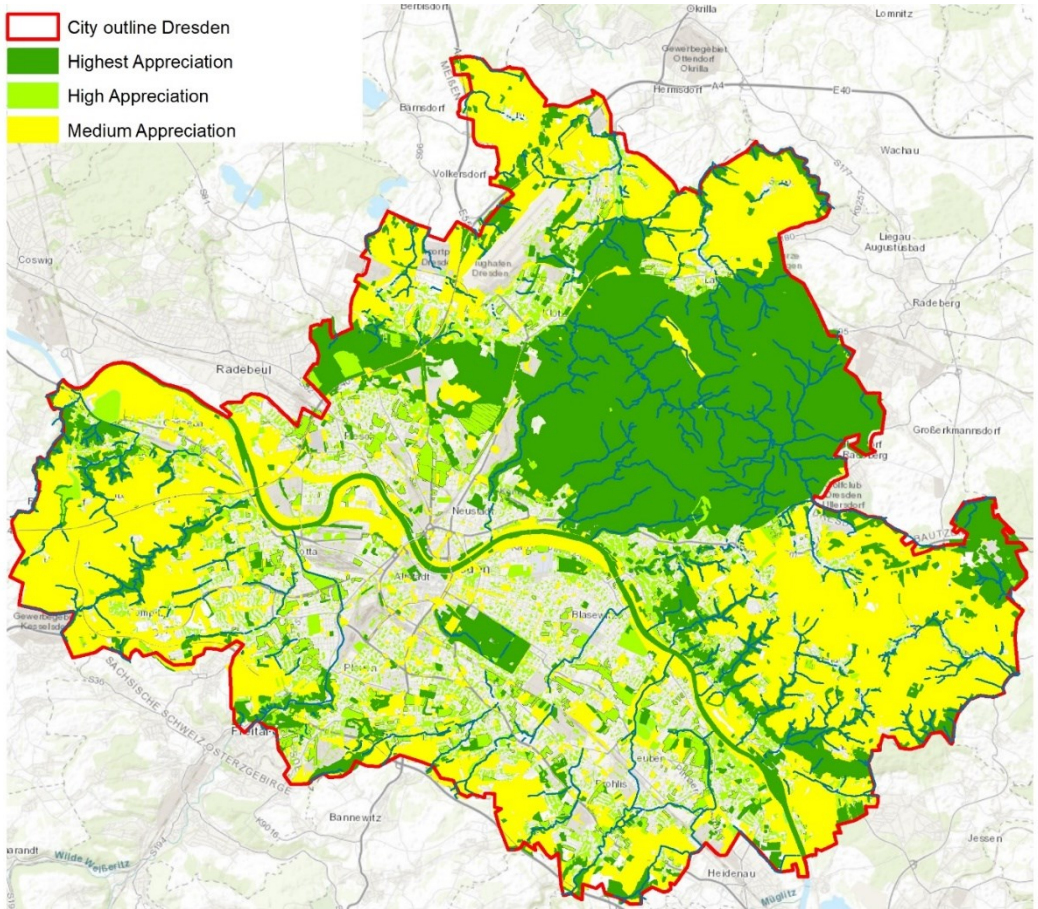
Most preferred urban green areas in Liberec (minimal 3 mentions):

- Lidové sady/Zoo 60
- Přehrada Hacov 52
- Liberecká výšina 17
- Lesní koupaliště 14
- Ještěd, u Ještědem 12
- Park u Zlatého/zamku 12
- Sportovní park Vesec 8
- Park ve Vratislavicích 8
- Budysinsky park 6
- Park pod Albertem 4
- Park u galerie 3
- Pivovarské rybníky 3
- Králův/Královsky haj 3
- Ruprechtice 3
- Ekopark 3



Urban green landscape elements and their appreciation by the respondents

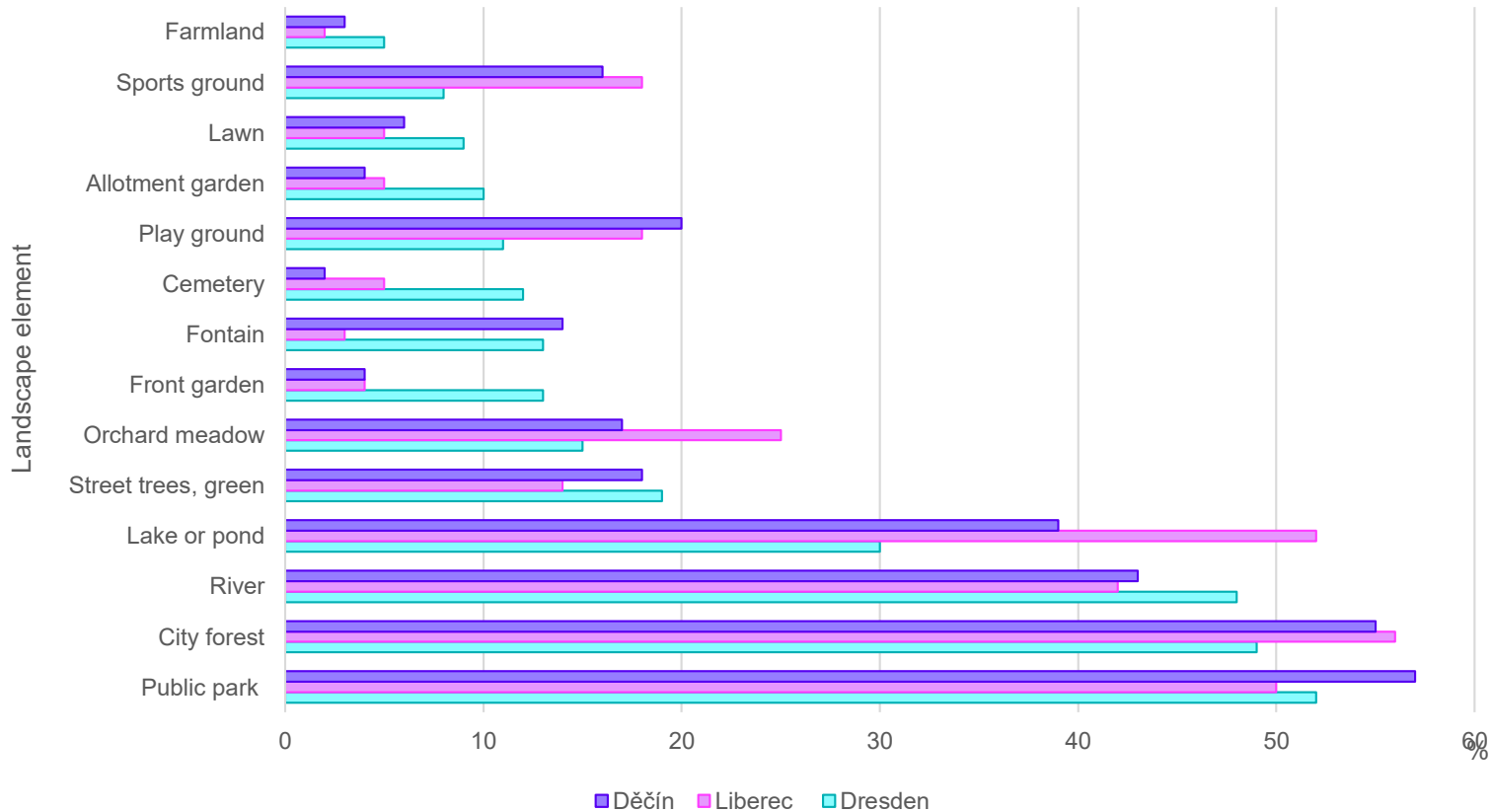
Landscape element	Dresden (%)	Liberec (%)	Děčín (%)
Public park	52	50	57
City forest	49	56	55
River	48	40	43
Lake or pond	30	53	39
Street trees and street green	19	14	18
Orchard meadow	15	25	17
Front garden at the house	13	4	4
Fontain	13	3	14
Cemetery	12	5	2
Play ground	11	18	20
Allotment garden	10	5	4
Lawn	9	5	6
Public sport grounds	8	18	16
Agricultural area	5	2	3



[Photos: K. Grunewald]

Landscape elements and their appreciation

Important elements for wellbeing



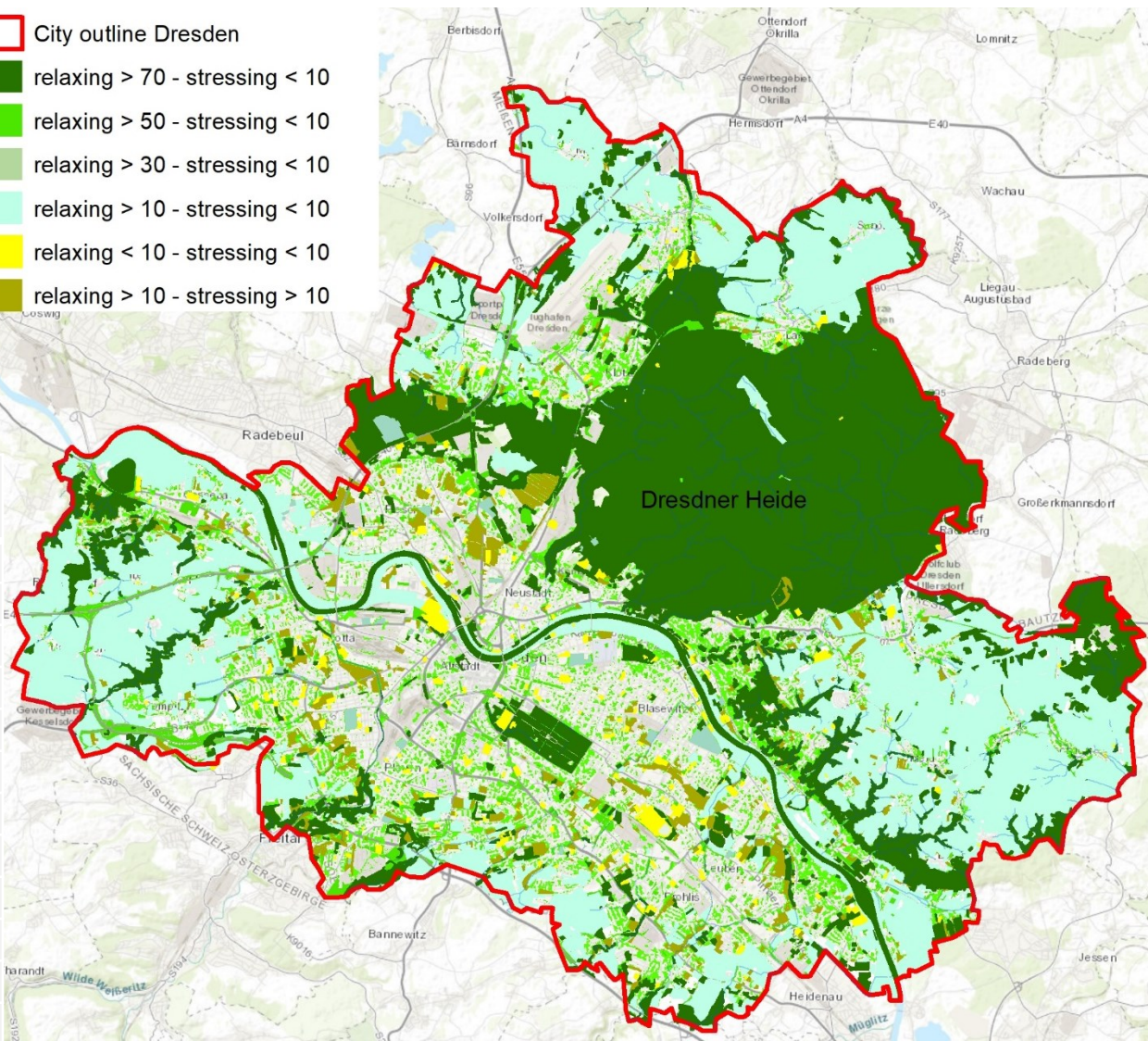
How to improve? Complaints about Urban Green Spaces

General Compliants	Liberec	Dresden	Děčín
Poor state of preservation or lack of equipment	23.8	37.0	32.4
Condition and usability of roads and pathways	21.2	9.2	8.1
Quality or absence of water bodies and elements	17.4	5.0	8.6
State or maintenance of green areas	12.2	22.7	15.2
Litter and dog excrements	10.3	9.2	12.4
State / lack of sports and play equipments	7.7	5.9	11.4
Social interaction	4.8	3.4	8.1

Special issues for Liberec:

- Missing pathways to/along the water of Přebrada Harcov
- Bad water quality and few place for swimming (Přebrada)
- Bad quality of the restaurant's food and service (Přebrada)
- Pathways are not good (uneven, dog dirt, handrail broken)
- Missing playground, toilets, bins, benches and barks for rent

Dresden: Recreation and Health Service of green-blue Elements following the self- evaluation of the respondents



Landscape element relaxing - versus stressing%	Dresden (%)
Public park	70.2 – 1.3
City forest	84.7 – 0.0
River	83.8 – 0.0
Lake or pond	83.8 – 0.0
Street trees and street green	56.2 – 0.9
Orchard meadow	41.3 – 1.7
Front garden at the house	47.7 – 3.8
Cemetery	34.9 – 8.5
Lawn	29.4 – 6.4
Agricultural area	22.6 – 3.0
Public sport grounds	5.4 – 9.8
Allotment garden	31.5 – 10.2

Conclusions

- Near nature elements are most preferred
- People know and appreciate health effects of GI
- Closer green spaces are higher valued
- A lot can be improved by just small changes



Bevölkerungspräferenzen für städtische Grün- und Wasserflächen in der Städte Liberec und Dresden

Ralf-Uwe Syrbe

Karsten Grunewald, Patrycia Brzoska, Olaf Bastian,
Jiří Louda, Ina Neumann, Lenka Dubová